

# Ph.D. Program in Speech–Language–Hearing Sciences Newsletter

Fall 2020



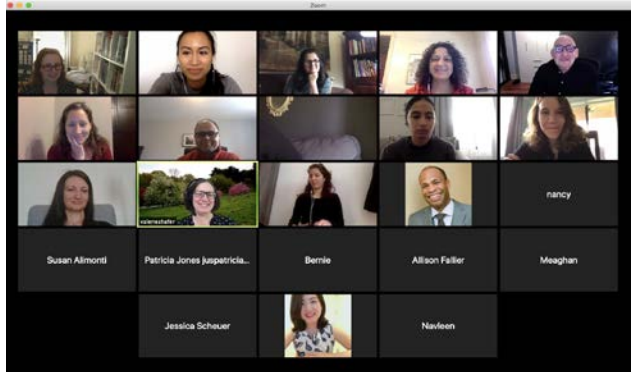
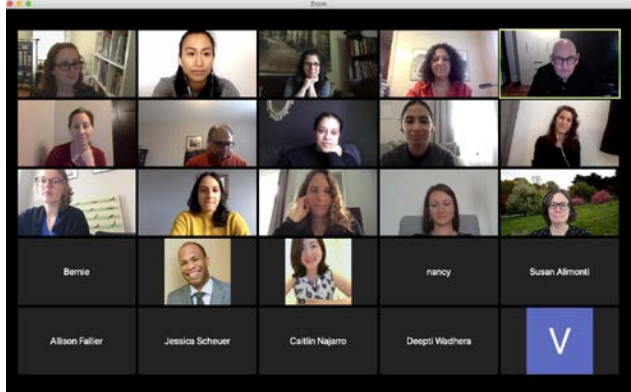
Hope springs eternal – if you nurture it. Getty Images / ipopba

## *Welcome Back!!!!*

Message from Dr. Mira Goral, Executive Officer

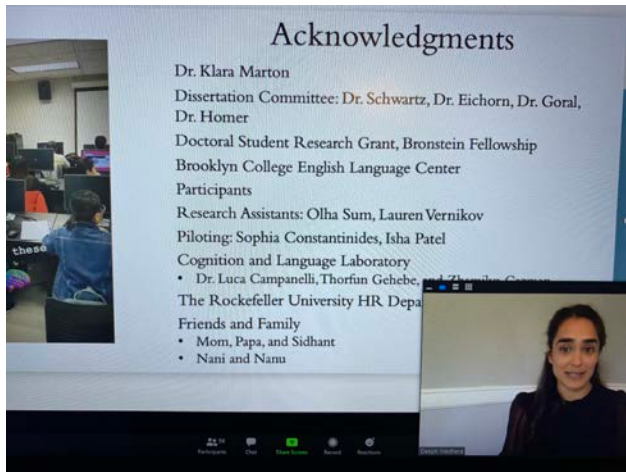
Welcome to the Fall 2020 semester! I am excited about seeing all of you in our upcoming meetings, seminars, and talks, and individually in my office hour or when you'd like to meet with me. I know meeting online is not quite the same as getting together in person, but we make it work! I am committed to trying to make this semester a good one for all of us – students, faculty, staff – despite the challenges we all face. Amid the isolation many of us may feel, I am hopeful that we can maintain physical distancing but minimize social isolation by communicating, supporting each other, and collaborating. I would like to reiterate that our program is committed to providing a safe and just environment to all, maximizing inclusion and speaking out against any signs of racism. Let's rededicate our efforts toward this goal!

# SLHS IN ACTION



Screenshots from  
Erin Reilly's Defense  
on April 29, 2020

Photos from  
Deepri Wadhera's Defense  
on July 16, 2020



## OUR NEW STUDENTS

Please welcome the following students who have begun our program in the Fall. Thank you to everyone who helped us welcome this cohort on August 28<sup>th</sup> at the New Student Orientation.

**Stephani Feinstein.** Stephani Feinstein is interested in learning about speech and language development, particularly in the early stages, and multilingualism and its effects on cognition. She will tentatively be working in Dr. Klara Marton's lab.

**Yuliya (Julie) Kovalenko.** Julie is interested in learning about aphasia, dementia, bilingualism and language in the aging brain and will tentatively be working in Dr. Mira Goral's lab.

**Danilo Lombardo.** Danilo is interested in learning about speech perception and production, the phonetics-phonology interface, and bilingualism and will tentatively be working in Dr. Doug Whalen's lab.

**Genevieve Medina.** Genevieve is interested in pediatric bilingualism and will tentatively be working in Dr. Valarie Shafer's lab.

**Rivka Zelikovitz.** Rivka is interested in learning about the articulation, accents, and prosody in young bilingual Yiddish speakers and will tentatively be working in Dr. Doug Whalen's lab.

## UPCOMING EVENTS

### Save the Date!

#### **Colloquia Series**

Date: 9/16, 9/23, 10/28, 11/11, 11/18, 12/2

Place: via Zoom

Time: 2:45pm-4:00pm

#### **Open House- Webinar and Lab Tours**

Date: October 28, 2020

Place: via Zoom

Time: 4:30pm-5:30pm

#### **Open House- Meet the Faculty**

Date: October 9, 2020

Place: via Zoom

Time: 10:00am-12:00pm

#### **End of Semester Potluck**

Date: December 4, 2020

Place: via Zoom

Time: 1:00pm-3:00pm

## FUTURE EVENTS TO LOOK OUT FOR

### **Alumni Event**

April, 2021 (tentative)

An email will be sent when there is a confirmed date.

If you have events, job postings, workshops, conferences, etc. that you would like our students, faculty and alumni to know about, you are welcome to send those announcements to the Assistant Program Officer, Andre Perez, [aperez3@gc.cuny.edu](mailto:aperez3@gc.cuny.edu)

## ACADEMIC ACHIEVEMENTS

### Dissertation Defenses

*Dr. Erin Reilly*

“Visual perspective taking in autism spectrum disorders.”

April 29, 2020

Chair: Dr. Richard Schwartz

*Dr. Deepti Wadhera*

“Working Memory Training: Cognitive and Linguistic Implications in Adult English Language Learners.”

July 16, 2020

Chair: Dr. Klara Marton

### Completion of Second Exam

**Thorfun Gehebe** passed on May 15, 2020.

**Ghada Shejaeya** passed on May 26, 2020.

**Katherine Paulino** passed on June 1, 2020.

**Bernadette Ojukwu** passed on June 4, 2020.

**Gerald Imaezue** passed on June 17, 2020.

**Katarina Antolovic** passed on August 4, 2020.

**Hyungi Chun** passed on September 9, 2020.

### Advancements to Level II

**Katarina Antolovic** passed her first exam with her paper entitled “Interpretation and neural plasticity: Evidence from language brokers.” and advanced to level II on June 1, 2020.

## PUBLICATIONS

- Avila, J.F., Arce Rentería, M.A., Jones, R.N., **Vonk, J.M.J.**, Turney, I., Sol, K., Seblova, D., Arias, F., Hill-Jarrett, T., Levy, S.A. Meyer, O., Racine, A.M., Tom, S.E., Melrose, R.J., Deters, K., Medina, L.D., Carrión, C.I., Díaz-Santos, M., Byrd, D.R., Chesebro, A., Colon, J., Igwe, K.C., Maas, B., Brickman, A.M., Schupf, N., Mayeux, R., & Manly, J.J. (2020). Education Differentially Contributes to Cognitive Reserve Across Racial/Ethnic Groups. *Alzheimer's & Dementia*. doi: 10.1002/alz.12176
- Bahr, R.H., **Silliman, E.R.**, & Berninger, V. W. (2020). Derivational morphology bridges phonology and orthography: Insights into the development of word-specific spellings by superior, average, and poor spellers. *Language, Speech, and Hearing Services in Schools*, 51(3), 640-654. NIHMS 1572269
- Battaglia, B.** (2020). Autism Spectrum Disorders and Word Associations. In R. Branski & S. Molfenter, *Speech Language Pathology Casebook* (pp. 88-90). Thieme Medical Publishers.
- Battaglia, D.** (2020). Explicit teaching of critical thinking skills in communication science and disorders. *Teaching and Learning in Communication Sciences & Disorders*, 4, (2), 1-15. <https://ir.library.illinoisstate.edu/tlcsd/vol4/iss2/6> [ir.library.illinoisstate.edu]
- Bishop, J.**, Intlekofer, D. (2020) Lower working memory capacity is associated with shorter prosodic phrases: Implications for speech production planning. *Proceedings of the 10th International Conference on Speech Prosody 2020*, 191-195.
- Bishop, J.**, Kuo, G., & Kim, B. (2020). Phonology, phonetics, and signal-extrinsic factors in the perception of prosodic prominence: Evidence from Rapid Prosody Transcription. *Journal of Phonetics*, 82, 100977.
- Carl, M.**, Kent, R.D., **Levy, E.S.**, & **Whalen, D.H.** (2020). Vowel acoustics and speech intelligibility in young adults with Down syndrome. *Journal of Speech, Language, and Hearing Research*, 63, 674-687.
- Chondrogianni, V., & **Schwartz, R.G.** (2020). Case marking and word order in Greek heritage children. *Journal of Child Language* 47, 766–795.
- Cialdella, L.A., Kabakoff, H.C., Preston, J.L., Dugan, S.H., Spencer, C., Boyce, S.E., Tiede, Mark K., **Whalen, D.H.**, McAllister, T. (2020). Auditory-perceptual acuity in rhotic misarticulation: Baseline characteristics and treatment response. *Clinical Linguistics and Phonetics*. doi:10.1080/02699206.2020.1739749
- DeLuca, Z.W.** (2020, July). A sister sparks a CSD career. *The ASHA Leader*, <https://leader.pubs.asha.org/doi/10.1044/leader.FPLP.25062020.72/full/> [leader.pubs.asha.org]
- Eisenberg, S.L.**, Bredin-Oja, S., & Crumrine, K. (2020). Use of imitation training for targeting grammar: A narrative review, *Language, Speech, and Hearing Services in Schools*, 51, 205-225.
- Eisenberg, S.** (2020). Using language sample analysis to monitor progress in targeting grammar. *Topics in Language Disorders*, 40, 135-148.
- Higby, E.**, Donnelly, S., Yoon, Y. and **Obler, L.K.** (2020). The effect of second-language vocabulary on word retrieval in the native language. *Bilingualism: Language & Cognition*, 23(4), 812-824. doi: 10.1017/S136672891900049X
- Holliday, N., **Bishop, J.**, & Kuo, G. (2020). Prosody and political style: The case of Barack Obama and the L+H\* pitch accent. *Proceedings of the 10th International Conference on Speech Prosody 2020*, 670–674.

- Lerman, A., Goral, M. and Obler, L.K.** (2019). The complex relationship between pre-stroke and post-stroke language abilities in multilingual individuals with aphasia, *Aphasiology*, 1-22. doi: 10.1080/02687038.2019.1673303
- Lerman, A., Goral, M., Edmonds, L., and Obler, L.K.** (2020). Measuring treatment outcome in severe Wernicke's aphasia, *Aphasiology*. doi: 10.1080/02687038.2020.1787729
- Levy, E.S., Moya-Galé, G., Chang, Y.M., Campanelli, L., MacLeod, A.N., Escorial, S., & Maillart, C.** (2020). Effects of speech cues in French-speaking children with dysarthria. *International Journal of Language and Communication Disorders*, 55(3), 401-416. <https://doi.org/10.7916/d8-hcc5-d611> [doi.org]
- Levy, E.S., Moya-Galé, G., Chang, Y.M., Freeman, K., Forrest, K., Brin, M.F., & Ramig, L.A.** (2020). The effects of intensive speech treatment on intelligibility in Parkinson's disease: a randomised controlled trial. *The Lancet's EClinicalMedicine*, 24, 100429. <https://doi.org/10.1016/j.eclinm.2020.100429> [doi.org]
- Mody, M. & McDougle, C.J.** (2020). Getting the Word "Out": A role for the Motor System in Autism Spectrum Disorder. *ASHA Perspectives*, vol. 4, no.6.
- Talkar, T., Williamson, J.R., Hannon, D, Rao, H.M., Yuditskaya, S., Claypool, K., Sturim, D., Nowinski, N., Saro, H., Stamm, C., **Mody, M.**, McDougle, C.J., Quartieri, T.F. (2020). Assessment of speech and fine motor coordination in children with autism spectrum disorder. *IEEE Access* doi: 10.1109/ACCESS.2020.3007348
- Vonk, J.M.J., Bouteloup, V., Mangin, J., Dubois, B., Blanc, F., Gabelle, A., Ceccaldi, M., Annweiler, C., Krolak-Salmon, P., Belin, C., Rivasseau-Jonveaux, T., Jullian, A., Sellal, F., Magnin, E., Chupin, M., Habert, M., Chêne, G., Dufouil, C., & on behalf of the MEMENTO cohort Study Group** (2020). Semantic loss marks early Alzheimer's disease-related neurodegeneration in older adults without dementia. *Alzheimer's & Dementia: Diagnosis, Assessment & Disease Monitoring*. doi: 10.1002/dad2.12066
- Vonk, J.M.J., Higby, E., Nikolaev, A., Cahana-Amitay, D., Spiro III, R., Albert, M.L., & Obler, L.K.** (2020). Demographic effects on longitudinal semantic processing, working memory, and cognitive speed. *Journal of Gerontology: Psychological Sciences*. doi: 10.1093/geronb/gbaa080
- Whalen, D.H., DiCanio, C.T., & Dockum, R.** (2020). Phonetic documentation in three collections: Topics and evolution. *Journal of the International Phonetic Association*, 1-27. doi:10.1017/S0025100320000079
- Ying, G., **Vonk, J.M.J.**, Sol, K., Mayeux, R., Brickman, A.M., Manly, J.J., & Zahodne, L.B. (2020). Family ties and aging in a multi-ethnic cohort. *Journal of Aging and Health*. doi: 10.1177/0898264320935238

### In Press

- Bortz, M.A.** Ed. (in press). *A Guide to Global Language Assessment: A Lifespan Approach*. Slack Publications.
- Bortz, M.A.** (in press). Methods for devising a standardized language assessment for isiZulu pre-schoolers: Implications for Africa. In. U. M. Ludtke, E. Kija & M.K. Karia. *Handbook of Communication Disabilities and Language Development in Sub-Saharan Africa*. New York, NY: Springer Publications.
- Bortz, M.A.** (in press). Tasks for assessing language in Africa: The passive construction. *Handbook of Communication Disabilities and Language Development in Sub-Saharan Africa*. New York, NY: Springer Publications.

- Centeno, J.G.**, & Harris, J. L. (in press). Implications of United States service evidence for growing multiethnic adult neurorehabilitation caseloads worldwide. *Canadian Journal of Speech-Language Pathology and Audiology*. <https://www.cjslpa.ca/cjslpa.ca>
- Centeno, J.G.**, Kiran, S., & Armstrong, E. (in press). Editorial: Aphasia management in growing multiethnic populations. *Aphasiology*. <https://doi.org/10.1080/02687038.2020.1781420> [\[doi.org\]](https://doi.org/)
- Centeno, J.G.**, Kiran, S., & Armstrong, E. (in press). Epilogue: Harnessing the experimental and clinical resources to address service imperatives in multiethnic aphasia caseloads. *Aphasiology*. <https://doi.org/10.1080/02687038.2020.1781421> [\[doi.org\]](https://doi.org/)
- Nikolaev, A., **Higby, E.**, **Hyun, J.**, Lehtonen, M., **Ashaie, S.**, Hallikainen, M., Hänninen, T., & Soininen, H. (in press). Production of inflected novel words in older adults with and without dementia. To appear in *Cognitive Science*.
- Rysling, A., **Bishop, J.**, Clifton, C., & Yacovone, A. (accepted). Preceding syllables are necessary for the accent advantage effect. *JASA Express Letters*.

## PRESENTATIONS

- Bishop, J.**, Intlekofer, D. (2020, July). *Is the intermediate phrase the basic unit of speech production planning? Evidence from individual differences*.  
17th Conference on Laboratory Phonology  
Virtual meeting due to COVID-19 pandemic.
- Bishop, J.**, Intlekofer, D. (2020, May). *Lower working memory capacity is associated with shorter prosodic phrases: Implications for speech production planning*.  
10th International Conference on Speech Prosody 2020  
Virtual meeting due to COVID-19 pandemic.
- Brown, C., Deliyiski, D.D., Zacharias, S.R.C., & **Naghibolhosseini, M.** (2020, May). *Glottal attack and onset time during connected speech in adductor spasmodic dysphonia*.  
Virtual Voice Symposium: Care of the Professional Voice.
- Campanelli, L.**, Van Dyke, J.A., & **Marton, K.** (2020, Sep). *Expectations modulate memory retrieval during sentence comprehension*.  
26th Architectures and Mechanisms of Language Processing (AMLaP) Conference  
Potsdam, Germany.
- Chang, Y.M., Jeong, P.Y., Ryu, E., Ihn, B.Y., Hwang, K.H., Sim, H. McAuliffe, M.J., & **Levy, E.S.** (2020). *Acoustical and perceptual consequences of speech cues in Korean-speaking children with cerebral palsy*.  
Motor Speech Conference  
Santa Barbara, CA
- Goral, M.** (2020, May). *Language intervention in multilingual speakers with aphasia*.  
American Congress of Rehabilitation Medicine (ACRM) Virtual Happy Hour  
Virtual meeting due to COVID-19 pandemic.

**Higby, E.**, & Kroll, J.F. (2020, Sep). *Cognate interference effects during bilingual word retrieval.*

Bilingualism Matters Research Symposium  
Virtual meeting due to COVID-19 pandemic.

Holliday, N., **Bishop, J.**, & Kuo, G. (2020, May). *Prosody and political style: The case of Barack Obama and the L+H\* pitch accent.*

10th International Conference on Speech Prosody 2020  
Virtual meeting due to COVID-19 pandemic.

**Levy, E.S.**, Chang, Y.M., Hwang, K.H., Bahrami, A., Brisman, R., Callahan, K., Cerva, A., Choi, A., Giaccone, N., Hong, E., Kraemer, C., Shoemaker, S., Yim, H., & McAuliffe, M.J. (2020). *Effects of dual-focus speech treatment on communication in children with dysarthria.*

Motor Speech Conference  
Santa Barbara, CA

**Levy, E.S.**, & Hwang, K.H. (2020). *Advancing speech communication research in Moebius Syndrome.*

Moebius Syndrome Awareness Day, Mount Sinai Hospital  
New York, NY (Invited presentation).

**Levy, E.S.**, Moya-Gale, G., & Fox, C.M. (2020). *Webinar on Crosslinguistic exploration of LSVT LOUD for Parkinson's disease: Is a universal speech treatment approach plausible?*

New York, NY (Invited webinar).

Macbeth, A., **Higby, E.**, Atagi, N., & Chiarello, C. (2020, May). *The effects of bilingualism on resistance to proactive interference and brain integrity across the adult lifespan.*

Cognitive Neuroscience Society Annual Meeting  
Virtual meeting due to COVID-19 pandemic.

**Mody, M.** (2020) *Disentangling the interface between speech and language in neurodevelopmental disorders: Insights from neuroimaging.*

Brainmap Seminar, MGH Martinos Center  
Boston, MA (Invited talk)

Moya-Galé, G., Escorial, S., Bergeron, M.C., Harrison, S. & **Levy, E.S.** (2020). *Examining intelligibility and naturalness changes in French-speaking children with Cerebral Palsy: A small-scale randomized controlled trial.*

Motor Speech Conference  
Santa Barbara, CA

**Shafer, V.L.**, Rinker, T., **Kresh, S.**, **Hisagi, M.**, & **Higby, E.** (2020, Jun). *Neural measures of encoding and discrimination of American English vowels by Japanese, Russian, and Spanish second language learners of English.*

Conference on Multilingualism  
Virtual meeting due to COVID-19 pandemic.



Van Dyke, J.A., **Campanelli, L.**, Hale, J.T., Hancock, R., & Landi, N. (2020, Jul). *Assessing combinatorial processing in skilled- and less-skilled comprehenders*. 27<sup>th</sup> Annual Society for the Scientific Study of Reading (SSSR) Meeting Newport Beach, California.

Yousef, A., Deliyski, D.D., Zacharias, S.R.C., de Alarcon, A., Orlikoff, R.F. & **Naghbolhosseini, M.** (2020, May). *Spatial segmentation of glottal area in high-speed videoendoscopy during connected speech*. Virtual Voice Symposium: Care of the Professional Voice.

*\*Below are conferences for which our community had abstracts accepted. However, due to safety concerns in response to the COVID-19 pandemic, the conference was cancelled.\**

**Battaglia, D.** (2020, Apr). *Evidence Based Practice and Knowledge Translation*. Annual CUNY Research Day- Brookdale Health Science Campus New York, NY (conference cancelled).

Guo, L.Y, Spencer, L., **Eisenberg, S.L.**, Wilson, M., & Gross, B. (2020, Nov). *Using a picture description task to measure grammaticality in children: Replication and validation*. Proposal accepted for presentation at the Annual Convention of the American Speech-Language-Hearing Association San Diego, CA (Convention canceled).

**Eisenberg, S.L.** (2020, Nov). *Traditional articulation therapy: To do or not to do?* Proposal accepted for presentation at the Annual Convention of the American Speech-Language-Hearing Association San Diego, CA (Convention canceled).

**Eisenberg, S.L.**, Bredin-Oja, S., & Crumrine, K. (2020, May). *Imitation training for targeting grammar: A narrative review*. Proposal accepted for presentation at the Symposium on Research in Child Language Disorders University of Wisconsin-Madison <http://www.srclld.org/Archive/PresentationDetail.aspx?SUBID=3783> [srclld.org] (Conference canceled).

Hwang, K.H., Chang, Y.M., Abovich, J., Brisman, R., & **Levy, E.S.** (2020). *Effects of speech cues on acoustic measures in children with dysarthria*. Proposal accepted for presentation at the Annual Convention of the American Speech-Language-Hearing Association San Diego, CA (convention cancelled).

Jeong, P.Y., Chang, Y.M., Ihn, B.Y., Ryu, E., Hwang, K.H., Sim, H.S., McAuliffe, M. J., **Levy, E.S.** (2020). *Cross-linguistic study of articulation rate, dysarthria severity, and intelligibility in children with dysarthria*. Proposal accepted at the Annual Convention of the American Speech-Language-Hearing Association

San Diego, CA (convention cancelled).

**Levy, E.S.**, Chang, Y.M., Hwang, K.H., Yim, H., Shoemaker, S., Irace, S., Hong, E., Giaccone, N., Callahan, K., Brisman, R., Abovich, J., & McAuliffe, M.J. (2020). *Dual-focus speech treatment effects on narrative speech in children with dysarthria*.

Proposal accepted for presentation at the Annual Convention of the American Speech-Language-Hearing Association

San Diego, CA (Convention cancelled).

## AWARDS AND HONORS

**Alahna Cogburn** received the 2020-2021 Dean K Harrison Fellowship from the Graduate Center totaling \$10,000.

**Bernadette Ojukwu** received the 2020-2021 Dean K Harrison Fellowship from the Graduate Center totaling \$10,000.

**Dr. Froma P. Roth** received the Honors of the Association from ASHA.

**Dr. Erika S. Levy** received the **Clinical Research Grant** from the American Speech, Language, Hearing Foundation totaling \$75,000 for her work, "Predictors of intelligibility changes in children with cerebral palsy". Role: PI

**Dr. Erika S. Levy** received the **Interdisciplinary Preparation Grant** from the **US Department of Education** amounting \$1,240,585 for her work, "Columbia Collaborate: Cross-disciplinary opportunities to improve communication outcomes", OSEP, H325K190018. Role: Co-PI (PI: Wang, Co-PI: Hartman)

**Dr. Erika S. Levy** was named an ASHA Fellow.

**Dr. Eve Higby** was accepted into the 2020 ASHA Pathways grant mentorship program.

**Dr. Jet Vonk** will graduate from a MSc. in Epidemiology from Utrecht University in September, and has started a second PhD in Epidemiology at Utrecht University (expected to defend in 2022).

**Dr. Jet Vonk** has been awarded an NIH NIA K99/R00 Award (1K99AG066934-01) (\$1,008,539) "Preclinical markers of Alzheimer's disease using psycholinguistic semantic measures" and will carry out this research at Columbia University for at least the first 2 years of this 5-year grant. This also means she will be promoted from Postdoc to Associate Research Scientist at Columbia University.

**Dr. Maryam Naghibolhosseini** received the ASHA Early Career Contributions in Research Award.

**Dr. Maryam Naghibolhosseini** received a Heiss Endowment Award (\$5,000), an Academic Communications Fellowship, a Trifecta Initiative Facilitating Funds Award (\$4,000) and an MSU-DFI Discretionary Funding Initiative (\$50,000) from Michigan State University. In addition, **Dr. Maryam Naghibolhosseini** has been appointed as an Affiliated Faculty for the Health and Risk Communication Center at Michigan State University.

**Dr. Maryam Naghibolhosseini** received a Research Scientist Career Development Award (K01, \$700,000) from NIH NIDCD.

**Dr. Mira Goral** received a research award of \$6,000 from PSC CUNY for their work “Processing negation in aphasia: a cross-linguistic investigation” (PIs: Goral, M. and Alxatib, S.).

## Other News

**Dr. Erin Reilly** was appointed as Assistant Professor at Molloy College.

**Dr. Jason Bishop** was promoted to Associate Professor, with tenure, at the College of Staten Island.

**Dr. Jose Centeno** was appointed to the Inaugural Diversity Leadership Council, Office of the Vice Chancellor for Diversity and Inclusion, Biomedical and Health Sciences at Rutgers University.

**Dr. Luca Campanelli** started a postdoctoral position in the Department of Linguistics at the University of Georgia (supervisor: Dr. John Hale) in August 2020.

**Dr. Luca Campanelli** will start a tenure-track position as Assistant Professor in the Department of Communicative Disorders at The University of Alabama in August 2021.

**Dr. Maria Mody** was elected to the Leadership Council of the Joint Committee on the Status of Women (JCSW) at Harvard Medical School. The JCSW is a standing committee of the Dean focused on encouraging leadership by and in support of women.

**Dr. Valerie Shafer** has been appointed to the Editorial Board of the Journal of Monolingual and Bilingual Speech.

## SLHS Doctoral Student Fellowship Awards

Thank you to all who have contributed and who continually contribute donation to the Speech-Language-Hearing Sciences Doctoral Student Fellowships. The fellowships and the discretionary funds allow the program to help students every year.

We've added a new fund with which we can help support our students; the Florence Award. The Florence Award supports outstanding women of color completing their doctoral education through the Child Language Laboratory at the CUNY Graduate Center. The award is intended as an annual stipend for each year of enrollment until completion of the dissertation defense. The

candidates, nominated by the Speech and Hearing Sciences Department, are expected to remain in good standing each academic year. The Florence Award was founded by Dr. Cecelia Davidson, class of 1998, in honor of her mother Florence Bushnell Davidson. Born in rural West Virginia in 1928, she always valued education despite the limited opportunities. “Women need education in order to develop understanding. Wisdom from understanding brings true independence.”

Four funds have been set up to honor three colleagues who contributed importantly to our program: Professors Moe Bergman, Arthur Bronstein, Martin Gitterman, and Cecelia Davidson.

- The Professor Arthur J. Bronstein and Elsa Bronstein Fellowship for Excellence in Dissertation Writing in Speech-Language-Hearing Sciences.
- Moe and Hannah Bergman Scholarship for Conference Travel: The Moe and Hannah Bergman Award makes funds available to students who travel to present research papers at conferences.
- Martin Gitterman Excellence in Teaching Award: The Martin Gitterman Teaching Award gives awards for Excellence in Teaching.
- The Florence Award for outstanding women of color completing their doctoral education through the Child Language Laboratory at the CUNY Graduate Center.

**The recipients for 2020 are:**

Professor Arthur J. Bronstein and Elsa Bronstein Fellowship

**Deepti Wadhera**, *Working Memory Training: Cognitive and Linguistic Implications in Adult L2 Learners of English*

Moe and Hannah Bergman Scholarship for Conference Travel

**Stanley Chen**, *Academy of Aphasia (China, November 2019)*  
**Lia Pazuelo**, *ASHA Annual Convention (Orlando, FL., November 2019)*

Martin Gitterman Excellence in Teaching Award

**Lia Pazuelo**, *Brooklyn College*  
**Stanley Chen**, *Lehman College*

Florence Award

**Katherine Paulino**  
**Bernadette Ojukwu**  
**Thorfun Gehebe**

These awards are given to a number of students each year. To contribute to these funds, please go to the program’s website: <http://www.gc.cuny.edu/SLHSciences> and click on “Support the GC” or send a check payable to The Graduate Center Foundation (see below). All checks should include account number 212731. Please indicate this number as well as the name of the award in which you want your contribution placed (e.g., Bergman, Bronstein, Gitterman, and/or Florence)

All checks should be made out to The Graduate Center Foundation and sent to:

CUNY Graduate Center  
Attention: Development Office  
365 Fifth Avenue  
New York, NY 10016

***Please be sure to put the account number 212731 in the memo section of your check.***